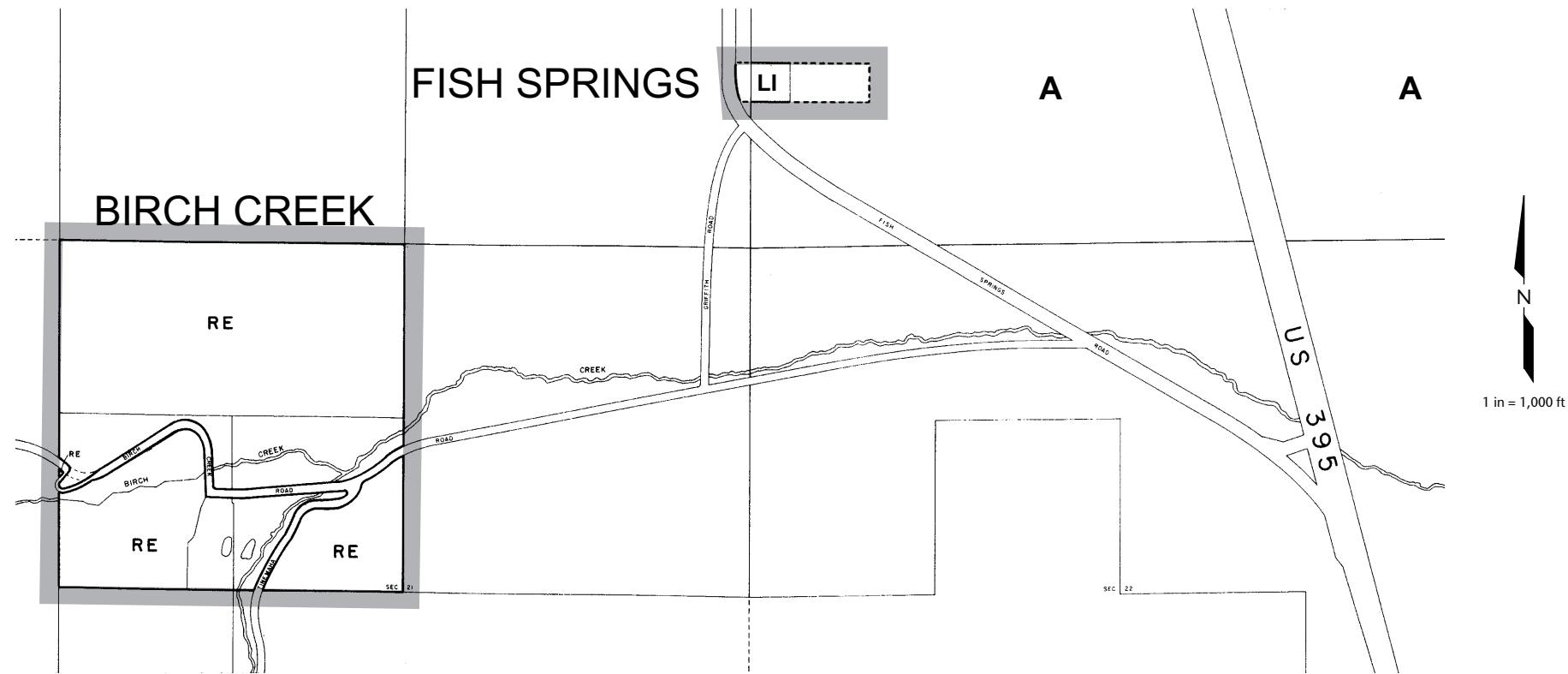
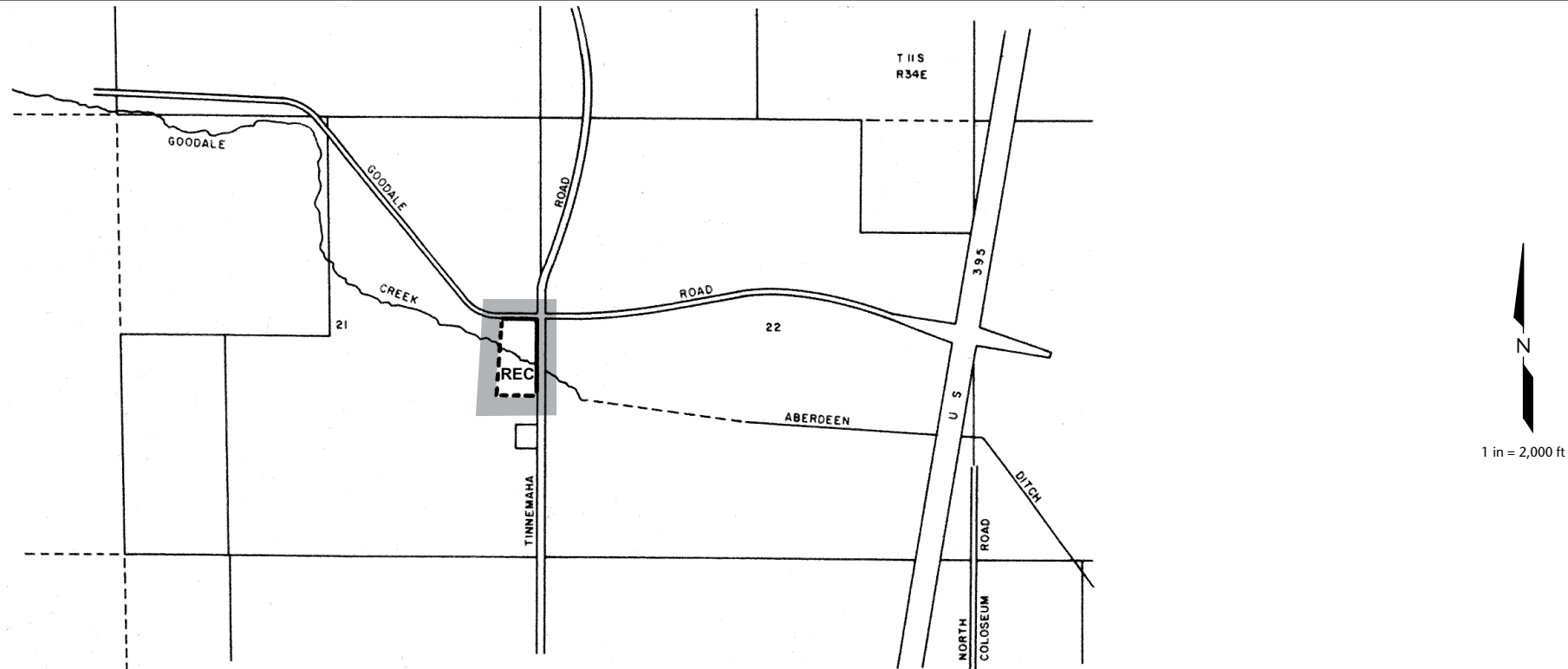


Fish Springs and Birch Creek



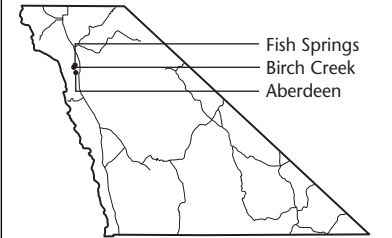
Aberdeen



Inyo County General Plan

Land Use and Conservation/
Open Space Elements

Diagram 14



Key to Land Use Designations

- RESIDENTIAL**
- RR Residential Ranch
- RE Residential Estate
- RRM Residential Rural Medium Density
- RRH Residential Rural High Density
- RVL Residential Very Low Density
- RL Residential Low Density
- RM Residential Medium Density
- RMH Residential Medium-High Density
- RH Residential High Density

- COMMERCIAL**
- CBD Central Business District
- RC Retail Commercial
- HC Heavy Commercial/Commercial Service
- REC Resort/Recreational

- INDUSTRIAL**
- LI Light Industrial
- GI General Industrial

- OTHER**
- NH Natural Hazards
- OSR Open Space and Recreation
- PF Public Service Facilities
- A Agriculture
- NR Natural Resources
- SFL State and Federal Lands
- TL Tribal Lands/BIA

Certificate of Adoption

I hereby certify that these elements, consisting of a text and thirty-one (31) maps are the land use and conservation/open space elements of the Inyo County General Plan that was recommended for adoption by the Inyo County Planning Commission on _____

Attest:

Chair, Inyo County Planning Commission

Charles S. Thistlethwaite, Director

Certificate of Adoption

I hereby certify that the elements consisting of a text and thirty-one (31) maps are the land use and conservation/open space elements of the Inyo County General Plan that was adopted by the Inyo County Board of Supervisors on _____

Attest:

Chair, Inyo County Board of Supervisors

Clerk of the Board