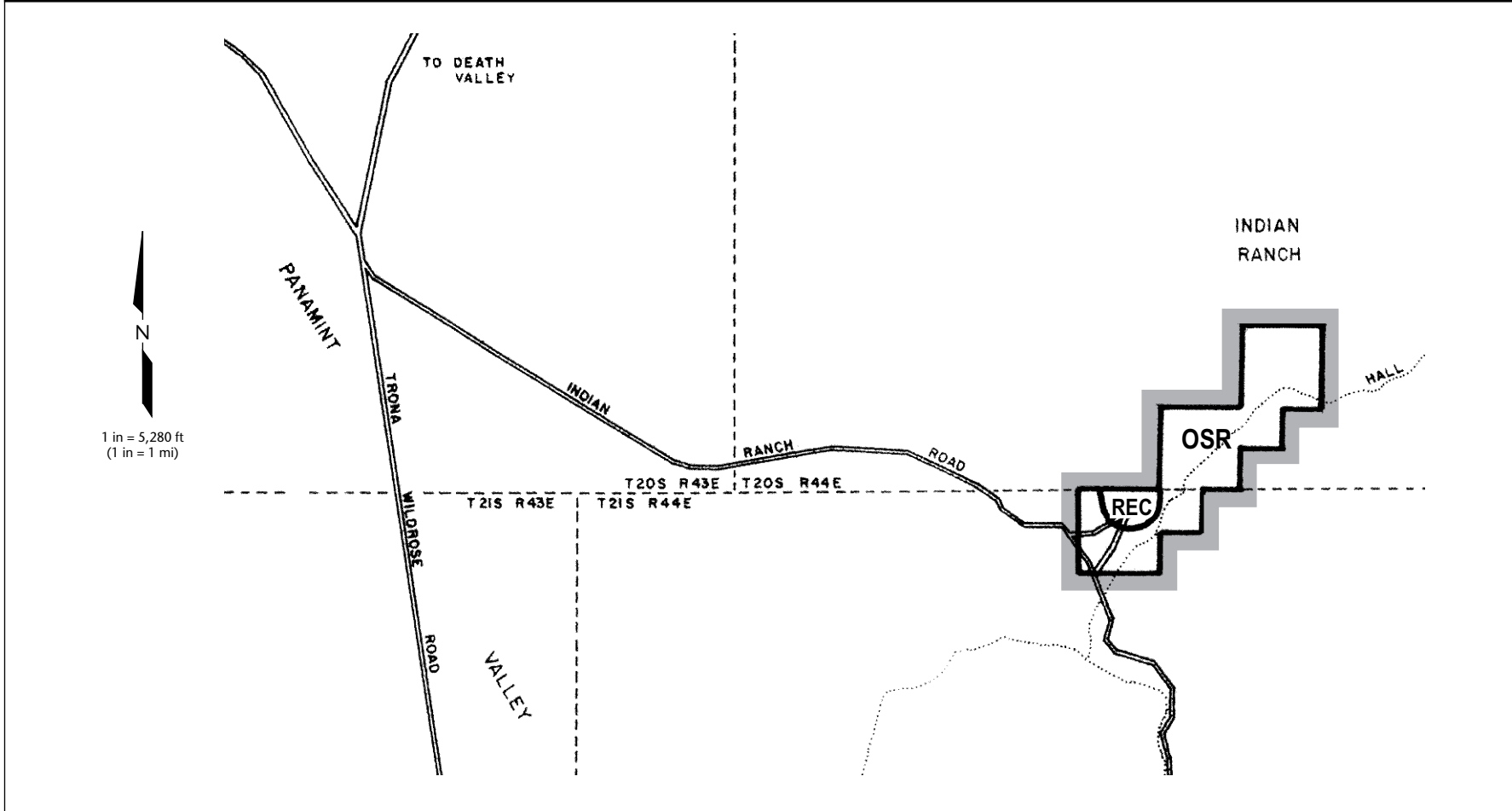


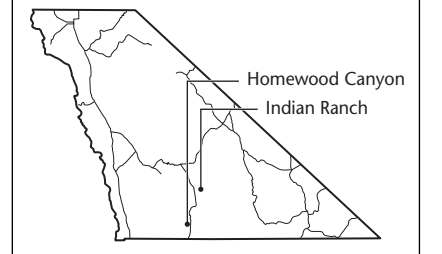
# Indian Ranch



# Inyo County General Plan

Land Use and Conservation/  
Open Space Elements

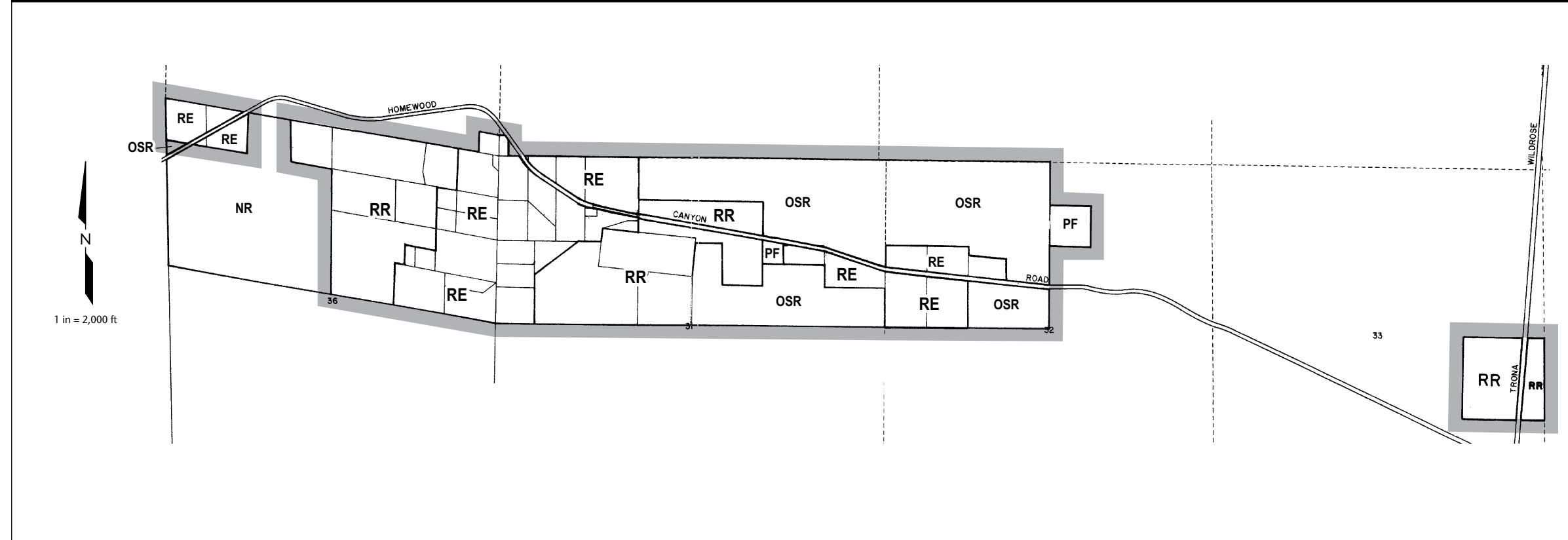
## Diagram 25



### Key to Land Use Designations

<b>RESIDENTIAL</b>	
RR	Residential Ranch
RE	Residential Estate
RRM	Residential Rural Medium Density
RRH	Residential Rural High Density
RVL	Residential Very Low Density
RL	Residential Low Density
RM	Residential Medium Density
RMH	Residential Medium-High Density
RH	Residential High Density
<b>COMMERCIAL</b>	
CBD	Central Business District
RC	Retail Commercial
HC	Heavy Commercial/Commercial Service
REC	Resort/Recreational
<b>INDUSTRIAL</b>	
LI	Light Industrial
GI	General Industrial
<b>OTHER</b>	
NH	Natural Hazards
OSR	Open Space and Recreation
PF	Public Service Facilities
A	Agriculture
NR	Natural Resources
SFL	State and Federal Lands
TL	Tribal Lands/BIA

# Homewood Canyon



### Certificate of Adoption

I hereby certify that these elements, consisting of a text and thirty-one (31) maps are the land use and conservation/open space elements of the Inyo County General Plan that was recommended for adoption by the Inyo County Planning Commission on \_\_\_\_\_

Attest:  
\_\_\_\_\_  
Chair, Inyo County Planning Commission

\_\_\_\_\_  
Charles S. Thistlethwaite, Director

### Certificate of Adoption

I hereby certify that the elements consisting of a text and thirty-one (31) maps are the land use and conservation/open space elements of the Inyo County General Plan that was adopted by the Inyo County Board of Supervisors on \_\_\_\_\_

Attest:  
\_\_\_\_\_  
Chair, Inyo County Board of Supervisors

\_\_\_\_\_  
Clerk of the Board